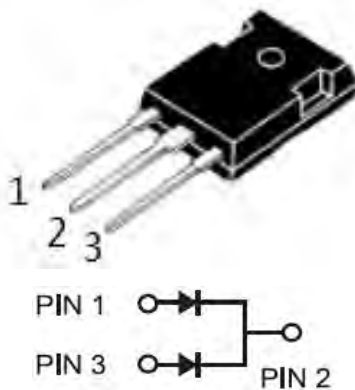


## Trench MOS Barrier Schottky Rectifier

**TO-247S**  
**TSR60L60PT**



### Features

- Advanced trench technology
- Low forward voltage drop
- Low power losses
- High efficiency operation
- Lead Free Finish, RoHS Compliant

### Applications

- DC/DC Converters
- AC/DC Adaptors
- Switching Power Supplies
- Freewheeling Diodes

### Maximum ratings and electrical characteristics (T<sub>J</sub> = 25°C unless otherwise noted)

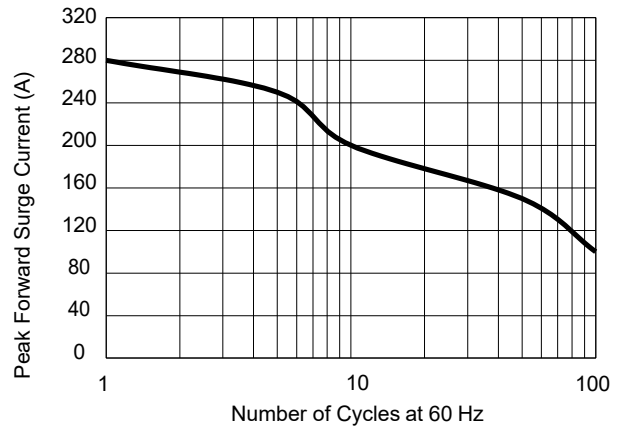
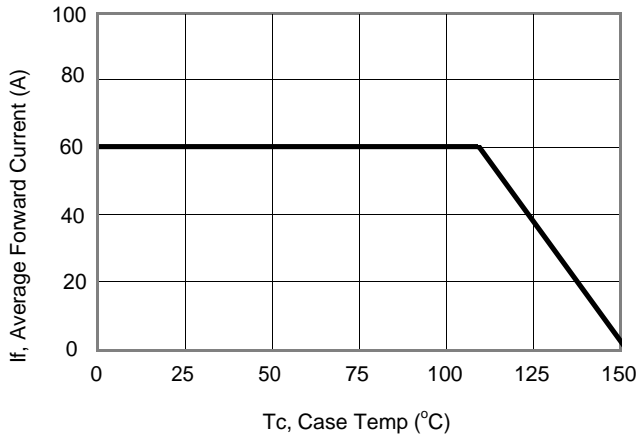
Parameter		Symbol	Limit		Unit
Maximum repetitive peak reverse voltage		VRRM	60		V
Maximum average forward rectified current	device	IF(AV)	60		A
	per diode		30		
Peak forward surge current 8.3 ms single half sine- wave superimposed on rated load per diode		IFSM	280		A
Operating junction and storage temperature range		TJ, TSTG	-50 to +150		°C
Typical thermal resistance per leg	TO-247	RθJC	2		°C/W
Instantaneous forward voltage per diode			TYP.	MAX.	V
	IF=3A	TJ=25°C	0.33	0.38	
	IF=3A	TJ=125°C	0.28	-	
	IF=30A	TJ=25°C	0.59	0.63	
	IF=30A	TJ=125°C	0.55	-	
Instantaneous reverse current per diode at rated reverse voltage	TJ=25°C		30	150	µA
	TJ=125°C		10	-	mA

Notes:

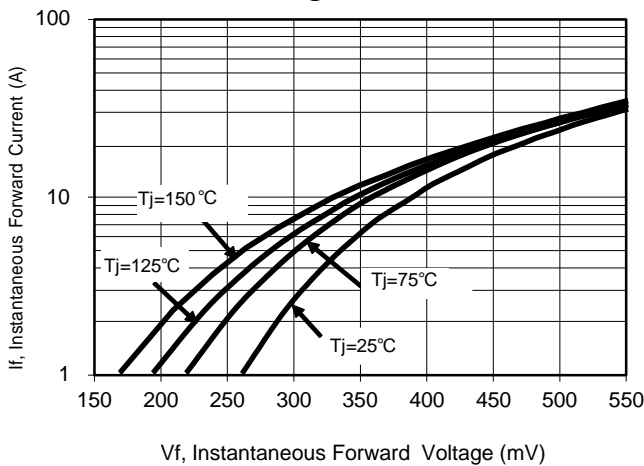
(1) Pulse test: 300 µs pulse width, 1 % duty cycle

(2) Pulse test: Pulse width ≦ 40 ms

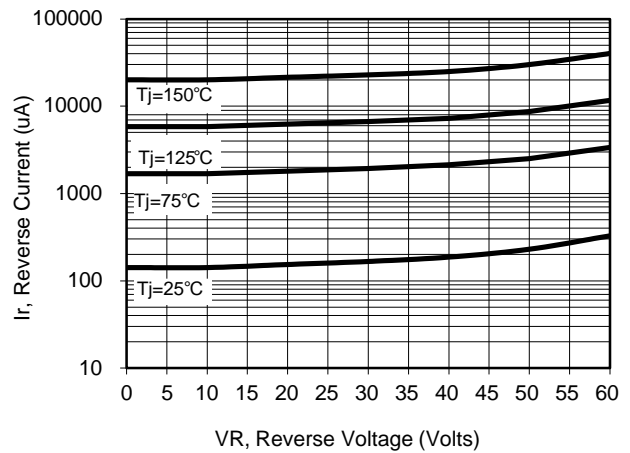
## RATINGS AND CHARACTERISTICS CURVES (TA = 25 °C unless otherwise noted)



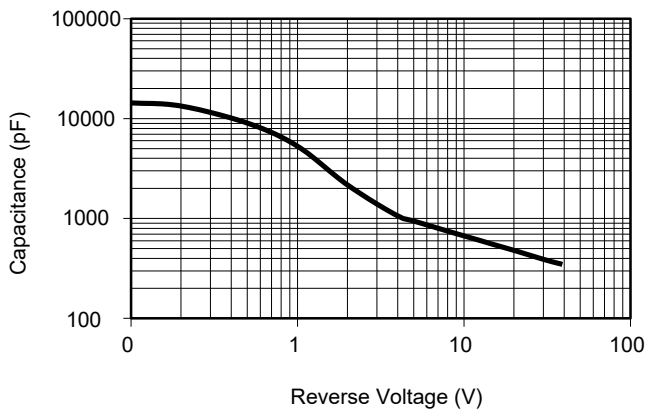
### Current Derating, Case



### Maximum Repetitive Surge Current



### Typical Forward Voltage



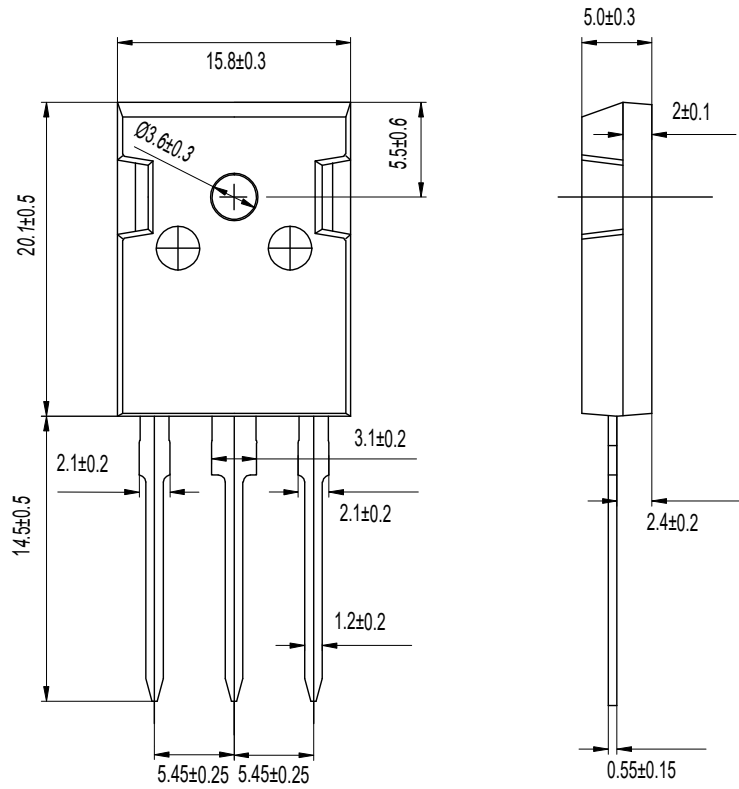
### Typical Reverse Current

### Typical Junction Capacitance

## PACKAGE OUTLINE DIMENSIONS

Note:unit: mm

### TO-247S



Dimensions in millimeters